



Daiwa House®
Group

Financial Factbook

Interim of Fiscal Year Ending March 31, 2008

April 1 to September 30, 2007



Daiwa House Industry Co.,Ltd.

ファクトブック 目次
2008年3月期中間期

FINANCIAL FACTBOOK INDEX
Interim of Fiscal Year Ending March 31, 2008

住宅着工戸数 / 住宅販売戸数	1	Housing starts / Sales of houses
連結業績		Consolidated ANALYSIS OF OPERATIONS
売上高 / 営業利益・経常利益・当期純利益 (損失)	2	Net sales / Operating income, Ordinary income, Net income (loss)
セグメント別売上高	2	Sales by segment
セグメント別営業利益 (損失)	2	Operating income (loss) by segment
財政状態		ANALYSIS OF FINANCIAL POSITION
自己資本比率 / その他の比率	3	Equity ratio, Other ratios
自己資本当期純利益率 / 一株当たり指標	3	Return on equity, Per share data
その他		OTHER DATA
設備投資額 / 減価償却費	4	Capital investments / Depreciation
財務諸表		FINANCIAL STATEMENTS
連結貸借対照表	5,6	Consolidated balance sheets
連結損益計算書	7	Consolidated statements of income
連結剰余金計算書	8	Consolidated statements of shareholders' equity
連結株主資本等変動計算書	8	Consolidated statements of changes in equity
連結キャッシュ・フロー計算書	9	Consolidated statements of cash flows
参考資料		REFERENCE MATERIALS
住宅事業	10	Residential
商業建築事業	10	Commercial construction
リゾート・スポーツ施設事業	10	Resort hotels and sports life
ホームセンター事業	11	Home center
その他事業・都市型ホテル部門	11	Other - city center hotels
PL比較表(実績比) 2007年3月期中間期 / 2008年3月期中間期	12	Comparisons of P/L (between Interim of FYE 2007/3 and FYE 2008/3)
大和ハウスグループ主要各社の経営指標	13	Indexes of main subsidiaries' financial statements
個別業績		Non-consolidated ANALYSIS OF OPERATIONS
売上高 / 営業利益・経常利益・当期純利益	14	Net sales / Operating income, Ordinary income, Net income
部門別売上高	14	Sales by segment
部門別売上総利益率	14	Gross profit ratio by segment
財政状態		ANALYSIS OF FINANCIAL POSITION
自己資本比率・その他の比率	15	Equity ratio, Other ratios
自己資本当期純利益率・一株当たり指標	15	Return on equity, Per share data
財務諸表		FINANCIAL STATEMENTS
貸借対照表	16,17	Non-consolidated balance sheets
損益計算書	18	Non-consolidated statements of income
参考資料		REFERENCE MATERIALS
住宅事業	19	Residential
マンション事業	20	Condominiums for sale
部門別受注高・売上高の状況	21,22	Orders received by segment, sales by segment
PL比較表(実績比) 2007年3月期中間期 / 2008年3月期中間期	23	Comparisons of P/L (between Interim of FYE 2007/3 and FYE 2008/3)



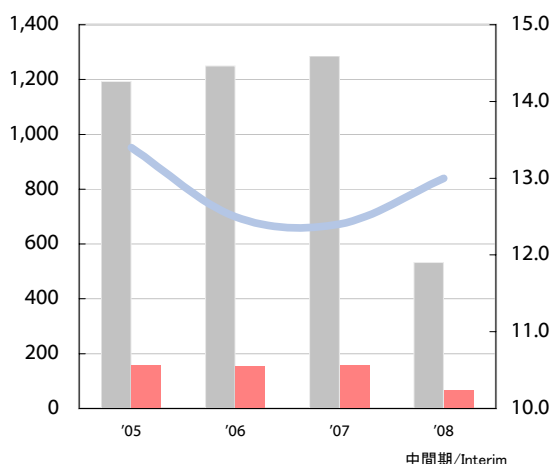
Daiwa House Group

住宅着工戸数／住宅販売戸数
Housing starts / Sales of houses

住宅着工戸数—プレハブ着工戸数

Prefabricated housing starts in whole housing starts

(千戸/Thousands of units)

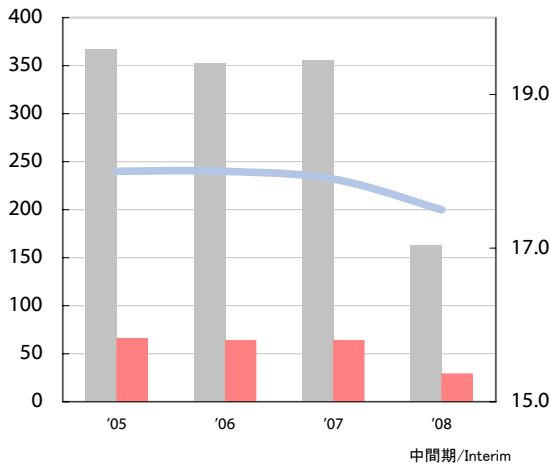


■ 住宅着工戸数 Housing starts
■ プレハブ着工戸数 Prefabricated housing starts
— プレハブシェア Prefabricated housing share

持家着工戸数—プレハブ着工戸数

Prefabricated housing starts in private-owned housing starts

(%) (千戸/Thousands of units)



■ 持家着工戸数 Private-owned housing starts
■ 持家着工戸数のうち、プレハブ着工戸数 Prefabricated housing starts in private-owned houses
— 持家着工戸数のプレハブシェア Prefabricated housing share in private-owned houses

(千戸/Thousands of units, プレハブシェア%/ Share data -%)

Fiscal years ended March 31	2005	2006	2007	2007中間期 /Interim	2008中間期 /Interim
住宅着工戸数 Housing starts	1,193	1,249	1,285	665	533
プレハブ着工戸数 Prefabricated housing starts	160	156	160	81	69
プレハブシェア (%) Prefabricated housing share (%)	13.4	12.5	12.4	12.2	13.0
持家着工戸数 Private-owned housing starts	367	352	356	197	163
持家着工戸数の内、プレハブ着工戸数 Prefabricated housing starts in private-owned houses	66	64	64	34	29
持家着工戸数のプレハブシェア (%) Prefabricated housing share in private-owned houses (%)	18.0	18.0	17.9	17.4	17.5

(注) 住宅着工戸数及びプレハブ着工戸数は、「住宅着工統計」(国土交通省)より

Source: Statistics for housing (including prefabricated) starts are from Housing Starts Survey by Ministry of Land, Infrastructure and Transport

(戸/Units)

Fiscal years ended March 31	2005	2006	2007	2007中間期 /Interim	2008中間期 /Interim	2008予想 /Estimated
住宅販売戸数 Sales of houses	42,855	43,632	44,983	21,560	21,234	45,700
戸建 Single-family houses, contracting	10,410	9,641	9,309	4,669	4,640	9,200
分譲 Subdivisions	2,060	1,944	1,955	1,028	862	1,750
マンション Condominiums for sale	3,727	4,391	4,981	2,064	1,757	4,850
集合 Rental houses	26,658	27,656	28,738	13,799	13,975	29,900



Daiwa House
Group

業績

Analysis of operations

売上高 / 営業利益・経常利益・当期純利益 (損失)

Net sales / Operating income, Ordinary income, Net income (loss)

(百万円 / ¥ Million)

Fiscal years ended March 31	2005	2006	2007	2007中間期 /Interim	2008中間期 /Interim	2008予想 /Estimated
売上高 Net sales	1,365,913	1,528,983	1,618,450	777,698	825,880	1,700,000
営業利益 Operating income	67,849	80,072	85,678	37,629	40,720	100,000
経常利益 Ordinary income	74,209	103,073	89,356	39,066	40,882	100,000
当期純利益 Net income	40,262	45,184	46,393	20,150	23,639	58,000

セグメント別売上高

Sales by segment

(百万円 / ¥ Million)

Fiscal years ended March 31	2005	2006	2007	2007中間期 /Interim	2008中間期 /Interim	2008予想 /Estimated
住宅事業 Residential	854,574	909,587	965,898	463,736	472,363	1,000,000
商業建築事業 Commercial construction	363,830	445,251	477,692	224,629	259,815	509,000
リゾート・スポーツ施設事業 Resort hotels and sports life	55,748	66,482	67,762	34,784	32,651	65,000
ホームセンター事業 Home center	59,164	63,273	62,241	31,350	31,430	62,400
その他事業 Other	104,129	121,982	124,646	61,018	69,430	144,800
消去 Eliminations	-71,533	-77,594	-79,790	-37,819	-39,810	-81,200
合計 Total	1,365,913	1,528,983	1,618,450	777,698	825,880	1,700,000

セグメント別営業利益 (損失)

Operating income (loss) by segment

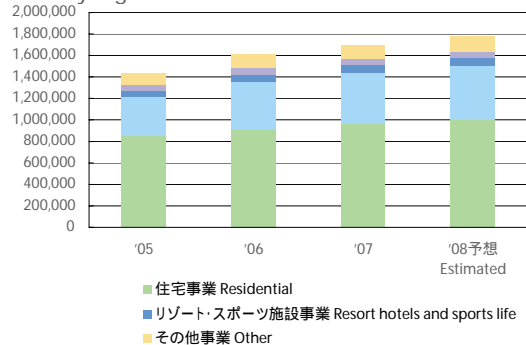
(百万円 / ¥ Million)

Fiscal years ended March 31	2005	2006	2007	2007中間期 /Interim	2008中間期 /Interim	2008予想 /Estimated
住宅事業 Residential	50,046	50,965	53,166	23,277	20,894	60,000
商業建築事業 Commercial construction	27,420	39,517	46,933	20,476	26,914	55,700
リゾート・スポーツ施設事業 Resort hotels and sports life	1,507	635	1,013	764	284	300
ホームセンター事業 Home center	100	1,106	1,771	979	989	2,000
その他事業 Other	3,534	4,558	4,373	2,050	2,551	4,000
消去・全社 Eliminations/Corporate	-14,760	-16,711	-21,579	-9,920	-10,915	-22,000
合計 Total	67,849	80,072	85,678	37,629	40,720	100,000

セグメント別売上高

Sales by segment

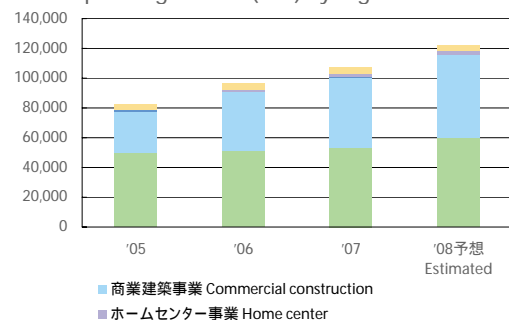
(百万円 / ¥ Million)



セグメント別営業利益 (損失)

Operating income (loss) by segment

(百万円 / ¥ Million)



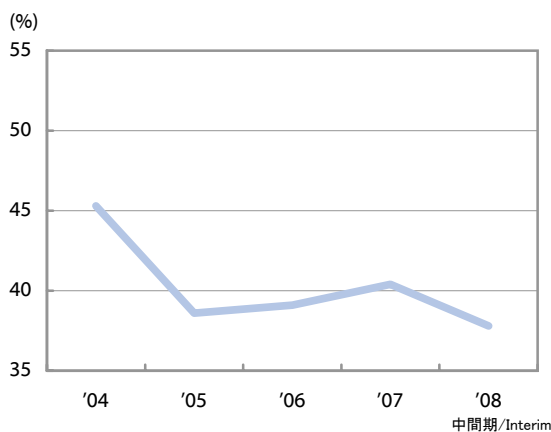
(注) 棒グラフは内部取引額を含んでいます。

(Note) Prior to consolidation adjustments.

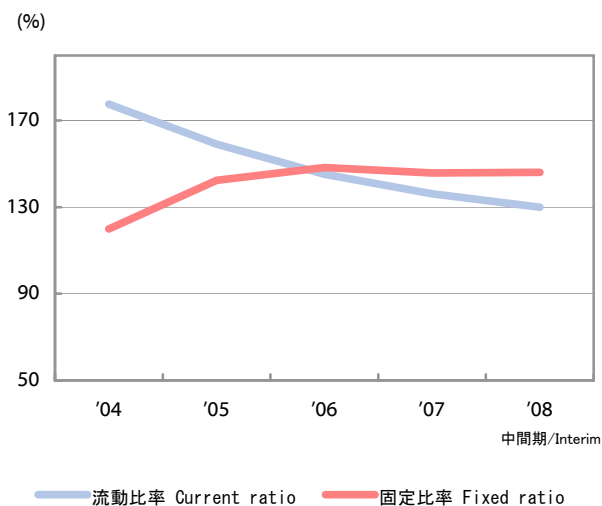


財政状態
Analysis of financial position

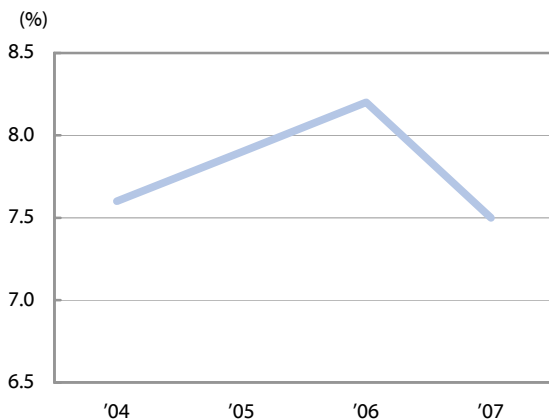
自己資本比率
Equity ratio



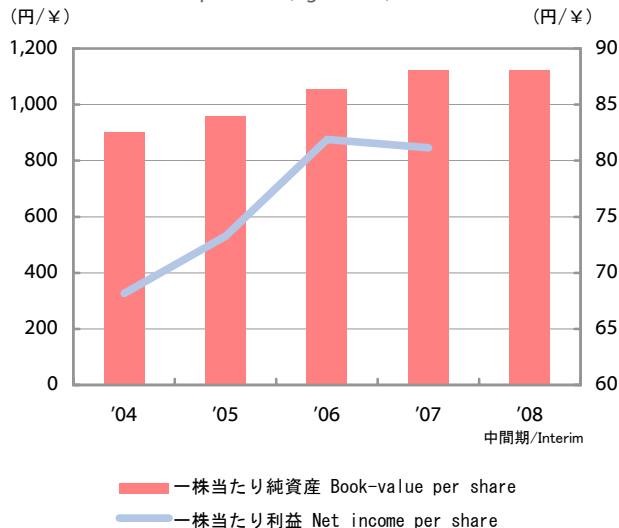
流動比率／固定比率
Current ratio／Fixed ratio



自己資本当期純利益率
Return on equity



一株当たり純資産（左目盛）
Book-value per share (left scale)
一株当たり利益（右目盛）
Net income per share (right scale)



(%, 一株当たり数値については円/Per share data: ¥)

Fiscal years ended March 31	2004	2005	2006	2007	2008中間期 /Interim
自己資本比率 Equity ratio	45.3	38.6	39.1	40.4	37.8
流動比率 Current ratio	177.6	159.0	145.1	136.1	129.9
固定比率 Fixed ratio	119.9	142.4	148.3	145.8	146.1
自己資本当期純利益率 Return on equity	7.6	7.9	8.2	7.5	-
一株当たり純資産 (円) Book-value per share(¥)	902.32	959.08	1,053.37	1,122.88	1,123.40
一株当たり利益(円) Net income per share(¥)	68.16	73.26	81.88	81.15	-

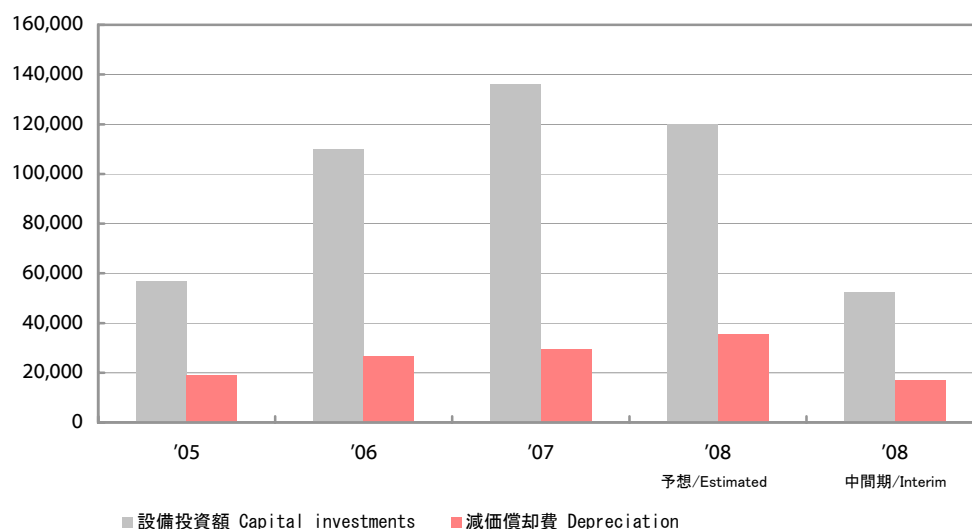


その他 Other data

設備投資額／減価償却費

Capital investments / Depreciation

(百万円/¥Million)



設備投資額

Capital investments

(百万円/¥Million)

Fiscal years ended March 31	2005	2006	2007	2007中間期 /Interim	2008中間期 /Interim	2008予想 /Estimated
設備投資額 Capital investments	56,695	110,143	136,171	81,200	52,278	120,000
住宅事業 Residential	7,699	12,642	12,599	6,224	4,846	13,000
商業建築事業 Commercial construction	31,908	77,100	98,812	62,878	36,172	85,700
リゾート・スポーツ施設事業 Resort hotels and sports life	850	3,072	2,677	1,397	720	2,100
ホームセンター事業 Home center	725	611	3,119	1,392	286	500
その他事業 Other	15,842	17,410	19,907	9,094	10,102	19,000
消去及び全社 Eliminations/Corporate	-331	-694	-945	213	149	-300

減価償却費

Depreciation

(百万円/¥Million)

Fiscal years ended March 31	2005	2006	2007	2007中間期 /Interim	2008中間期 /Interim	2008予想 /Estimated
減価償却費 Depreciation	19,242	26,814	29,536	14,005	16,963	35,500
住宅事業 Residential	4,486	5,227	5,515	2,815	3,286	7,000
商業建築事業 Commercial construction	4,622	7,897	8,971	4,038	5,063	10,900
リゾート・スポーツ施設事業 Resort hotels and sports life	1,869	1,918	1,915	922	1,238	2,700
ホームセンター事業 Home center	704	665	736	326	422	900
その他事業 Other	5,875	9,635	11,096	5,364	6,428	12,900
消去及び全社 Eliminations/Corporate	1,684	1,470	1,299	539	524	1,100

Daiwa House
Group財務諸表
Financial statements

連結貸借対照表

Consolidated balance sheets

(百万円/¥ Million)

Fiscal years ended March 31		2004	2005	2006	2007	2008中間期 /Interim
資産の部	Assets					
流動資産	Current assets					
現金預金	Cash and cash equivalents	141,605	150,739	124,021	102,369	111,915
受取手形・売掛金	Trade notes and accounts receivable	52,729	70,304	60,631	60,238	59,838
有価証券	Marketable securities	64	24	-	-	-
たな卸資産	Inventories	267,919	324,238	368,334	432,328	492,477
その他の流動資産	Other	35,742	69,096	69,192	72,672	81,222
貸倒引当金	Allowance for doubtful receivables	-1,771	-1,861	-2,161	-1,274	-963
流動資産合計	Total current assets	496,290	612,542	620,019	666,334	744,490
固定資産	Fixed assets					
有形固定資産	Property, plant and equipment	344,268	441,387	505,471	602,260	626,379
無形固定資産	Intangible fixed assets	7,463	8,880	11,791	17,116	12,624
投資その他の資産	Investments and other assets	239,635	295,995	337,915	344,311	336,867
固定資産合計	Total fixed assets	591,367	746,264	855,178	963,688	975,871
資産合計	Total assets	1,087,658	1,358,806	1,475,197	1,630,022	1,720,362
負債の部	Liabilities					
流動負債	Current liabilities					
支払手形・買掛金	Trade notes and accounts payable	122,440	156,973	169,853	253,255	263,048
短期借入金	Short-term bank loans	550	13,175	6,183	6,933	10,913
一年以内返済予定の長期借入金	Current portion of long-term debt	51	1,367	2,927	1,070	1,426
コマーシャル・ペーパー	Commercial paper	-	-	-	-	60,000
未払法人税・事業税	Income taxes payable	14,218	15,699	16,211	15,832	13,536
その他の流動負債	Other	142,193	198,040	232,192	212,496	224,086
流動負債合計	Total current liabilities	279,453	385,256	427,368	489,588	573,010
固定負債	Long-term liabilities					
長期借入金	Long-term debt	911	6,555	13,527	50,570	44,083
その他の固定負債	Other	294,851	371,087	383,109	428,718	435,202
固定負債合計	Total long-term liabilities	295,762	377,642	396,637	479,288	479,285
負債合計	Total liabilities	575,215	762,898	824,006	968,876	1,052,295
少数株主持分	Minority interests	19,393	71,798	74,656	-	-
資本の部	Shareholders' equity					
資本金	Common stock	110,120	110,120	110,120	-	-
資本剰余金	Capital surplus	147,756	147,759	148,019	-	-
利益剰余金	Retained earnings	313,214	325,893	355,494	-	-
自己株式	Treasury stock	-3,883	-4,168	-3,571	-	-
土地再評価差額金	Land revaluation difference	-86,199	-69,229	-63,392	-	-
その他有価証券評価差額金	Net unrealized gain on available-for-sale securities	12,957	14,662	30,746	-	-
為替換算調整勘定	Foreign currency translation adjustments	-916	-927	-882	-	-
資本合計	Total shareholders' equity	493,049	524,109	576,534	-	-
負債、少数株主持分 及び資本合計	Total liabilities, minority interests and shareholders' equity	1,087,658	1,358,806	1,475,197	-	-



Daiwa House
Group

財務諸表
Financial statements

連結貸借対照表

Consolidated balance sheets

(百万円/¥ Million)

Fiscal years ended March 31		2004	2005	2006	2007	2008中間期 /Interim
純資産の部	Equity					
株主資本	Shareholders' equity					
資本金	Common stock	-	-	-	110,120	110,120
資本剰余金	Capital surplus	-	-	-	226,834	226,829
利益剰余金	Retained earnings	-	-	-	387,842	399,478
自己株式	Treasury stock	-	-	-	-7,692	-19,509
株主資本合計	Total shareholders' equity	-	-	-	717,104	716,918
評価・換算差額等	Valuation and translation adjustments					
その他有価証券評価差額金	Net unrealized gain on available-for-sale securities	-	-	-	29,873	21,156
土地再評価差額金	Land revaluation difference	-	-	-	-86,847	-86,586
為替換算調整勘定	Foreign currency translation adjustments	-	-	-	-821	-725
評価・換算差額等合計	Total valuation and translation adjustments	-	-	-	-57,795	-66,156
少数株主持分	Minority interests	-	-	-	1,837	17,303
純資産合計	Total equity	-	-	-	661,145	668,066
負債純資産合計	Total liabilities and equity	-	-	-	1,630,022	1,720,362



財務諸表
Financial statements

連結損益計算書

Consolidated statements of income

(百万円/¥ Million)

Fiscal years ended March 31		2005	2006	2007	2007中間期 /Interim	2008中間期 /Interim
売上高	Net sales	1,365,913	1,528,983	1,618,450	777,698	825,880
売上原価	Cost of sales	1,082,132	1,213,644	1,283,587	615,409	656,705
販売費及び一般管理費	Selling, general and administrative expenses	215,932	235,266	249,183	124,659	128,455
営業利益	Operating income	67,849	80,072	85,678	37,629	40,720
受取利息・配当金	Interest income and dividends	1,067	1,590	2,142	1,152	1,350
持分法による投資利益	Equity in earnings of associated companies	1,610	350	289	102	164
営業外収益計	Non-operating income	11,860	29,063	10,609	3,794	5,568
支払利息	Interest expense	736	1,321	1,750	693	1,419
営業外費用計	Non-operating expenses	5,500	6,062	6,931	2,357	5,405
経常利益	Ordinary income	74,209	103,073	89,356	39,066	40,882
特別利益	Extraordinary profit	2,130	2,422	1,911	596	807
特別損失	Extraordinary loss	13,231	23,340	14,818	6,920	2,082
税金等調整前当期純利益	Income before income taxes and minority interests	63,108	82,155	76,449	32,741	39,607
法人税等	Income taxes	20,356	33,645	29,982	12,546	15,990
少数株主損益	Minority interests in net income(loss) of subsidiaries	2,489	3,325	73	44	-22
当期純利益	Net income	40,262	45,184	46,393	20,150	23,639
一株当たり利益(円)	Basic net income per share (¥)	73.26	81.88	81.15	36.08	40.42
一株当たり配当金(円)	Cash dividends per share (¥)	17.00	20.00	20.00	-	-
配当性向(%)	Payout ratio (%)	23.2	24.4	24.6	-	-
金融収支	Balance between financial income and expenses	331	269	392	459	-69
発行済株式数(千株)	Number of outstanding shares (Thousands of shares)	546,222	546,915	587,158	587,320	579,279

Daiwa House
Group財務諸表
Financial statements

連結剰余金計算書

Consolidated statements of shareholders' equity

	(千株/Thousands)		(百万円/¥ Million)		
	発行済株式数 Outstanding number of shares of common stock	資本金 Common stock	資本剰余金 Capital surplus	利益剰余金 Retained earnings	
Balance, March 31, 2003	546,816	110,120	147,755	289,840	
当期純利益 Net income	-	-	-	37,256	
配当金 Cash dividends, ¥ 10.0 per share	-	-	-	-5,457	
役員賞与 Bonuses to directors and corporate auditors	-	-	-	-	
その他 Other	-390	-	1	-8,425	
Balance, March 31, 2004	546,426	110,120	147,756	313,214	
当期純利益 Net income	-	-	-	40,262	
配当金 Cash dividends, ¥ 15.0 per share	-	-	-	-8,184	
役員賞与 Bonuses to directors and corporate auditors	-	-	-	-	
その他 Other	-204	-	2	-19,398	
Balance, March 31, 2005	546,222	110,120	147,759	325,893	
当期純利益 Net income	-	-	-	45,184	
配当金 Cash dividends, ¥ 17.0 per share	-	-	-	-9,210	
役員賞与 Bonuses to directors and corporate auditors	-	-	-	-225	
その他 Other	693	-	259	-6,146	
Balance, March 31, 2006	546,915	110,120	148,019	355,494	

連結株主資本等変動計算書

Consolidated statements of changes in equity

	(千株/Thousands)		(百万円/¥ Million)						
	発行済株式数 Outstanding number of shares of common stock	資本金 Common stock	資本剰余金 Capital surplus	利益剰余金 Retained earnings	自己株式 Treasury stock	株主資本合計 Total shareholders' equity	評価・換算差額等 合計 Total valuation and translation adjustments	少数株主持分 Minority interests	純資産合計 Total equity
Balance, March 31, 2006	546,915	110,120	148,019	355,494	-3,571	610,063	-33,528	74,656	651,191
連結会計年度中の変動額 Changes during the period									
株式交換に伴う変動額 Net increase(decrease) in relation to share exchange	40,523	-	80,706	-	-3,557	77,149	-	-72,470	4,678
自己株式の内部取引に伴う変動額 Net decrease in relation to intercompany transaction of treasury stock	-	-	-1,894	-	-	-1,894	-	-	-1,894
剰余金の配当 Cash dividends, ¥ 20.0 per share	-	-	-	-10,868	-	-10,868	-	-	-10,868
役員賞与 Bonuses to directors and corporate auditors	-	-	-	-406	-	-406	-	-	-406
当期純利益 Net income	-	-	-	46,393	-	46,393	-	-	46,393
土地再評価差額金取崩額 Transfer due to sales of land	-	-	-	-2,798	-	-2,798	-	-	-2,798
持分法適用関連会社減少に伴う剰余金増加高 Increase due to exclusion from equity method accounting of former associated companies	-	-	-	26	-	26	-	-	26
自己株式の取得 Purchase of treasury stock	-	-	-	-	-607	-607	-	-	-607
自己株式の処分 Disposal of treasury stock	-280	-	3	-	43	46	-	-	46
株主資本以外の項目の連結会計年度中の 変動額(純額) Other amount of changes	-	-	-	-	-	-	-24,267	-348	-24,615
連結会計年度中の変動額合計 Total changes during the period	-	-	78,814	32,347	-4,121	107,040	-24,267	-72,819	9,954
Balance, March 31, 2007	587,158	110,120	226,834	387,842	-7,692	717,104	-57,795	1,837	661,145
中間連結会計期間中の変動額 Changes during the period									
剰余金の配当 Cash dividends, ¥ 20.0 per share	-	-	-	-11,743	-	-11,743	-	-	-11,743
中間純利益 Net income	-	-	-	23,639	-	23,639	-	-	23,639
土地再評価差額金取崩額 Transfer due to sales of land	-	-	-	-260	-	-260	-	-	-260
自己株式の取得 Purchase of treasury stock	-7,896	-	-	-	-11,850	-11,850	-	-	-11,850
自己株式の処分 Disposal of treasury stock	17	-	-4	-	33	28	-	-	28
株主資本以外の項目の中間連結会計期間中の 変動額(純額) Other amount of changes	-	-	-	-	-	-	-8,360	15,466	7,105
中間連結会計期間中の変動額合計 Total changes during the period	-	-	-4	11,636	-11,816	-185	-8,360	15,466	6,920
Balance, September 30, 2007	579,279	110,120	226,829	399,478	-19,509	716,918	-66,156	17,303	668,066

Daiwa House
Group財務諸表
Financial statements

連結キャッシュ・フロー計算書

Consolidated statements of cash flows

(百万円/¥ Million)

		2007中間期 /Interim	2008中間期 /Interim
営業活動によるキャッシュ・フロー	Operating activities		
税金等調整前中間純利益	Income before income taxes and minority interests	32,741	39,607
減価償却費	Depreciation	14,005	16,963
退職給付引当金の増減額	Provision for (reversal of) employees' retirement benefits, net of payments	1,870	-645
受取利息及び受取配当金	Interest income and dividends	-1,152	-1,350
支払利息	Interest expense	693	1,419
持分法による投資利益	Equity in earnings of associated companies	-102	-164
固定資産除売却損	Loss on sales and disposal of property, plant and equipment	984	783
固定資産減損損失	Impairment loss on property, plant and equipment	4,036	-
投資有価証券評価損	Write-down of marketable and investment securities	629	877
ゴルフ会員権評価損	Write-down of golf club membership	65	43
売上債権の増減額	Decrease (increase) in receivables	-2,284	2,848
たな卸資産の増加額	Increase in inventories	-24,866	-46,164
未成工事受入金の増加額	Increase in deposits received from customers	7,485	1,611
仕入債務の増加額	Increase in payables - trade	63,437	15,728
その他	Other - net	17,372	8,809
小計	Subtotal	114,916	40,368
利息及び配当金の受取額	Interest and dividends received	884	1,057
利息の支払額	Interest paid	-208	-865
法人税等の支払額	Income taxes - paid	-14,913	-16,459
営業活動によるキャッシュ・フロー	Net cash provided by operating activities	100,679	24,101
投資活動によるキャッシュ・フロー	Investing activities		
有形・無形固定資産の取得による支出	Purchases of property, plant and equipment	-106,049	-47,161
有形固定資産の売却による収入	Proceeds from sales of property, plant and equipment	961	997
投資有価証券の取得による支出	Purchases of marketable and investment securities	-8,136	-2,294
投資有価証券の売却による収入	Proceeds from sales of marketable and investment securities	96	642
連結子会社株式の取得による支出	Purchases of investments in subsidiaries	-236	-241
連結範囲の変更を伴う子会社株式の売却による収入	Net increase from sales of shares of the former consolidated subsidiaries	156	-
新規連結子会社の取得による収入	Net proceeds from purchases of shares of the newly consolidated subsidiaries	-	11,817
新規連結子会社の取得による支出	Payments for purchases of shares of the newly consolidated subsidiaries	-	-240
敷金・保証金の増減額	Increase (decrease) in lease deposits	2,509	-4,503
その他	Other - net	-3,318	985
投資活動によるキャッシュ・フロー	Net cash used in investing activities	-114,015	-39,998
財務活動によるキャッシュ・フロー	Financing activities		
短期借入金の増減額	Net increase (decrease) in short-term bank loans	415	-20
コマーシャル・ペーパーの増加額	Net increase in commercial paper	-	60,000
長期借入金の増加額	Proceeds from long-term debt	30,000	3,516
長期借入金の返済による支出	Repayments of long-term debt	-1,039	-12,407
自己株式の買取と売却による収支差額	Net of purchases and proceeds from sales of treasury stock	-225	-11,821
親会社による配当金の支払額	Dividends paid to shareholders	-10,868	-11,743
少数株主への配当金の支払額	Dividends paid to minority shareholders of subsidiaries	-739	-
債権流動化による収入	Proceeds from receivables sold to trust	5,009	-
債権流動化の償還による支出	Remittance to trust of receivables collected	-3,674	-3,551
財務活動によるキャッシュ・フロー	Net cash provided by financing activities	18,877	23,972
現金及び現金同等物の増加額	Net increase in cash and cash equivalents	5,541	8,076
現金及び現金同等物期首残高	Cash and cash equivalents, beginning of year	123,822	102,126
現金及び現金同等物中間期末残高	Cash and cash equivalents, end of interim	129,363	110,202

Daiwa House
Group

参考資料

Reference materials

住宅管理戸数の推移

Housing units under management

Fiscal years ended March 31	(戸数/Units)				一括借上 (入居保証)戸数 Lump-sum contracts (occupancy guarantee)	入居率 Occupancy rates	管理組合 からの受託棟数 Consignment agreements with HOAs
	2005	2006	2007	2008中間期 /Interim			
賃貸住宅管理戸数 Management of rental housing units	115,936	142,998	172,896	188,915	152,579	95.2	
大和リビング DAIWA LIVING CO., LTD.	106,650	131,583	159,288	174,336	140,166	95.3	
大和リース DAIWA LEASE CO., LTD.	2,036	2,872	3,851	4,183	4,049	94.8	
日本住宅流通 NIHON JYUTAKU RYUTU CO., LTD.	7,250	8,543	9,757	10,396	8,364	94.0	
分譲型マンション管理戸数/ダイワサービス Management of condominium units/ DAIWA SERVICE CO., LTD.	42,388	46,355	52,587	54,609			966

商業建築建物(転賃)面積の推移

Sublease floor spaces of commercial construction

Fiscal years ended March 31	(m ²)				入居賃貸面積 (m ²) Floor space	テナント数 Tenants	入居率※ Occupancy rates
	2005	2006	2007	2008中間期 /Interim			
大和リース DAIWA LEASE CO., LTD.	956,829	1,083,127	1,250,863	1,330,789	1,307,823	2,008	98.3
大和情報サービス DAIWA INFORMATION SERVICE CO., LTD.	624,207	724,342	891,904	945,140	936,405	1,476	99.1
ダイワロイヤル DAIWA ROYAL CO., LTD.	707,371	792,299	871,292	893,319	888,671	1,502	99.5
3社計 Total	2,288,407	2,599,768	3,014,059	3,169,248	3,132,899	4,986	98.9

商業建築建物賃貸(転賃)の状況

Other circumstances of commercial construction, lease/sublease

※入居面積/賃貸可能面積

リゾート・スポーツ施設事業

Resort hotels and sports life

ダイワロイヤルホテルズ

DAIWA ROYAL HOTELS

(人、稼働率を除く)

Fiscal years ended March 31	(人、稼働率を除く)			
	2006	2007	2008中間期 /Interim	
宿泊お客様数 Number of guests	上期 First half	1,669,329	1,761,123	1,636,366
	下期 Second half	1,439,925	1,525,192	
客室稼働率 (%) Room occupancy rates	上期 First half	55.3	58.9	55.8
	下期 Second half	57.8	53.2	
婚礼利用お客様数 Guests attending weddings	上期 First half	81,188	88,078	76,829
	下期 Second half	101,839	107,882	
メンバーズ期末会員数 Number of Daiwa Royal club members	9,921	9,288	9,173	

(注) ホテル数は29ヶ所

(Note) 29 hotels

ゴルフ場

Golf courses

(人、金額を除く)

Fiscal years ended March 31	(人、金額を除く)			
	2006	2007	2008中間期 /Interim	
ゴルフ場ご利用お客様数 Number of guests	上期 First half	191,718	186,052	194,684
	下期 Second half	145,741	161,573	
期末会員数 Number of members	上期 First half	5,461	5,237	5,054
	下期 Second half	5,339	5,161	
ゴルフ場売上高 (百万円) Net sales (¥ Million)	上期 First half	2,256	2,250	2,233
	下期 Second half	1,840	1,951	
ゴルフ場お客様1人当たり ご利用単価 (円) Sales account per customer (¥)	上期 First half	11,216	11,498	10,866
	下期 Second half	11,815	11,398	

(注) ゴルフ場は10ヶ所

(Note) 10 golf courses.



Daiwa House®
Group

参考資料

Reference materials

ホームセンター事業

Home center

(千人/Thousands, 円/¥)

Fiscal years ended March 31		2006	2007	2008中間期 /Interim
購入お客様数 Number of customers	上期 First half	12,428	12,481	12,179
	下期 Second half	12,101	11,732	
お客様1人当たり購入単価 Sales account per customer	上期 First half	2,232	2,282	2,337
	下期 Second half	2,372	2,387	

(注) リフォームを除く

(Note) Excluding home renovation

(m², 店/Stores)

Fiscal years ended March 31		2006	2007	2008中間期 /Interim
期末店舗面積 (外売場を除く) Sales floor space (except out-mall selling space)		196,192	207,476	217,659
期末店舗数 Number of stores		40	42	42

その他事業—都市型ホテル部門

Other—city center hotels

(客室数/Rooms)

Fiscal years ended March 31		2006	2007	2008中間期 /Interim
客室稼働率 (%) Room occupancy rates (%)	上期 First half	78.1	75.6	78.3
	下期 Second half	76.5	75.5	
ダイワロイネットホテル (ダイワロイヤル) Daiwa Roynet Hotels		(3) 599	(8) 1,675	(9) 1,869
ロイトン札幌 (大和ハウス工業) Royton Sapporo		(1) 292	(1) 292	(1) 292
大阪第一ホテル (大阪マルビル) OSAKA DAI-ICHI HOTEL		(1) 448	(1) 448	(1) 447
合計 Total		(5) 1,339	(10) 2,415	(11) 2,608

(注) ()内はホテル数

(Note) Figures in parentheses indicate the number of hotels in each category.

Daiwa House
Group参考資料
Reference materials

連結PL比較表(実績比) 2007年3月期中間期 / 2008年3月期中間期

Comparisons of P/L (between interim of FYE 2007/3 and FYE 2008/3)

		(百万円/ ¥ Million)		
		2007中間	2008中間	増減
		/Interim	/Interim	Increase/decrease
住宅事業	Residential	463,736	472,363	8,627
商業建築事業	Commercial construction	224,629	259,815	35,185 *1
リゾート・スポーツ施設事業	Resort hotels and sports life	34,784	32,651	-2,132 *2
ホームセンター事業	Home center	31,350	31,430	80
その他事業	Other	61,018	69,430	8,412
消去	Eliminations	-37,819	-39,810	-1,990
売上高	Net sales	777,698	825,880	48,182 *3
売上原価	Cost of sales	615,409	656,705	41,296
販売費及び一般管理費	Selling, general and administrative expenses	124,659	128,455	3,795
住宅事業	Residential	23,277	20,894	-2,383
商業建築事業	Commercial construction	20,476	26,914	6,437
リゾート・スポーツ施設事業	Resort hotels and sports life	764	284	-479 *2
ホームセンター事業	Home center	979	989	10
その他事業	Other	2,050	2,551	500
全社及び消去	Eliminations/Corporate	-9,920	-10,915	-995
営業利益	Operating income	37,629	40,720	3,090 *3
営業外収益	Non-operating income	3,794	5,568	1,773
持分法投資利益	Equity in earnings of associated companies	102	164	61
営業外費用	Non-operating expenses	2,357	5,405	3,047
経常利益	Ordinary income	39,066	40,882	1,816 *3
特別利益	Extraordinary profit	596	807	210
特別損失	Extraordinary loss	6,920	2,082	-4,838
税金等調整前中間純利益	Income before income taxes and minority interests	32,741	39,607	6,865
法人税等	Income taxes	12,546	15,990	3,444
少数株主損益	Minority interests in net income (loss) of subsidiaries	44	-22	-67
中間純利益	Net income	20,150	23,639	3,488 *3

*1 建築請負の増加、大和情報サービス・ダイワロイヤル・大和リースの増収等

The increase was due to increases in revenues from commercial construction contracts and increases in revenues of Daiwa Information Service, Daiwa Royal, Daiwa Lease and others.

*2 能登半島地震による一部ホテルの休業の影響

The decline was due to the suspension of some hotel operations as a result of the Noto Peninsula Earthquake.

*3 売上高、営業利益、経常利益、中間純利益ともに過去最高を更新

Sales, operating income, ordinary income and net income reached all-time highs.



Daiwa House
Group

参考資料
Reference materials

大和ハウスグループ主要各社の経営指標

Indexes of main subsidiaries' financial statements

(百万円/¥ Million)

		売上高 Net sales	営業利益 Operating income	経常利益 Ordinary income	中間純利益 Net income	総資産 Total assets	純資産 Equity	有利子負債 Interest-bearing debt
大和リース DAIWA LEASE CO., LTD.	2007中間期/Interim	62,407	3,466	3,365	6,370	261,473	103,533	-
	2008中間期/Interim	67,744	3,712	3,375	1,611	268,128	103,307	-
ダイワラクダ工業 DAIWA RAKUDA INDUSTRY CO., LTD.	2007中間期/Interim	20,611	714	784	4,019	40,906	25,523	-
	2008中間期/Interim	20,638	465	504	255	38,182	24,547	-
大和物流 DAIWA LOGISTICS CO., LTD.	2007中間期/Interim	16,575	531	538	309	22,587	14,283	3,000
	2008中間期/Interim	17,386	731	736	440	24,197	14,883	3,820
ダイワサービス DAIWA SERVICE CO., LTD.	2007中間期/Interim	11,956	491	527	847	10,065	4,361	-
	2008中間期/Interim	12,465	463	500	284	10,581	5,029	-
大和リビング DAIWA LIVING CO., LTD.	2007中間期/Interim	52,900	2,443	2,372	1,403	43,191	11,824	-
	2008中間期/Interim	62,256	2,573	2,553	1,819	48,582	14,072	-
大和情報サービス DAIWA INFORMATION SERVICE CO., LTD.	2007中間期/Interim	13,853	996	968	536	49,981	5,103	-
	2008中間期/Interim	16,323	1,100	1,254	666	55,163	5,963	-
ダイワロイヤル DAIWA ROYAL CO., LTD.	2007中間期/Interim	15,813	1,250	1,380	855	53,874	4,160	1,458
	2008中間期/Interim	18,213	1,799	2,017	1,135	57,507	6,004	900
日本住宅流通 NIHON JYUTAKU RYUTU CO., LTD.	2007中間期/Interim	8,011	298	369	221	9,583	2,842	-
	2008中間期/Interim	8,898	148	167	40	9,912	3,188	-
ロイヤルホームセンター ROYAL HOME CENTER CO., LTD.	2007中間期/Interim	31,350	949	951	746	42,201	32,877	2,000
	2008中間期/Interim	31,430	1,029	1,016	572	43,009	33,459	2,500

Daiwa House
Group業績
Analysis of operations

売上高／営業利益・経常利益・当期純利益

Net sales／Operating income, Ordinary income, Net income

(百万円/¥ Million)

Fiscal years ended March 31	2005	2006	2007	2007中間期 /Interim	2008中間期 /Interim	2008予想 /Estimated
売上高 Net sales	1,092,383	1,138,461	1,185,664	571,248	549,581	1,167,000
営業利益 Operating income	52,120	54,466	60,993	26,429	26,081	69,700
経常利益 Ordinary income	57,070	72,666	65,636	28,502	31,832	74,200
当期純利益 Net income	34,436	35,351	38,292	17,318	20,184	44,500

部門別売上高

Sales by segment

(百万円/¥ Million)

Fiscal years ended March 31	2005	2006	2007	2007中間期 /Interim	2008中間期 /Interim	2008予想 /Estimated
戸建住宅 Single-family houses, contracting	297,715	290,196	286,088	142,504	147,551	292,200
集合住宅 Rental houses	229,032	243,180	256,175	121,481	131,299	285,800
流通店舗 Commercial facilities	150,957	164,970	170,906	84,414	80,940	176,000
建築 Distributions, office buildings, factories	116,102	120,467	124,753	60,407	57,996	115,000
分譲住宅 Subdivisions	45,563	44,059	45,681	23,807	20,460	41,600
マンション建物 Condominiums for sale	83,508	100,024	108,008	45,946	35,651	101,700
土地 Land	101,939	106,567	121,412	56,667	61,899	129,000
仲介他 Real estate agency service and other	9,005	10,025	12,363	4,991	7,580	15,400
観光 Resort hotels and golf courses	58,562	58,969	60,274	31,026	6,201	10,300
合計 Total	1,092,383	1,138,461	1,185,664	571,248	549,581	1,167,000

部門別売上総利益率

Gross profit ratio by segment

(%)

Fiscal years ended March 31	2005	2006	2007	2007中間期 /Interim	2008中間期 /Interim	2008予想 /Estimated
戸建住宅 Single-family houses, contracting	23.5	23.1	23.1	22.9	22.3	22.6
集合住宅 Rental houses	23.9	23.9	24.1	24.3	22.7	23.7
流通店舗 Commercial facilities	19.9	20.8	20.5	21.6	22.9	22.4
建築 Distributions, office buildings, factories	14.8	16.9	19.0	19.2	18.4	18.7
分譲住宅 Subdivisions	20.0	19.5	20.1	20.5	18.5	19.0
マンション建物 Condominiums for sale	20.7	21.1	19.1	21.4	18.0	19.3
土地 Land	8.7	8.3	11.2	8.8	12.4	11.9
仲介他 Real estate agency service and other	26.5	30.6	47.7	37.7	54.8	54.5
観光 Resort hotels and golf courses	29.3	28.9	29.8	30.9	27.1	27.2
合計 Total	20.8	20.9	21.4	21.6	21.0	21.3



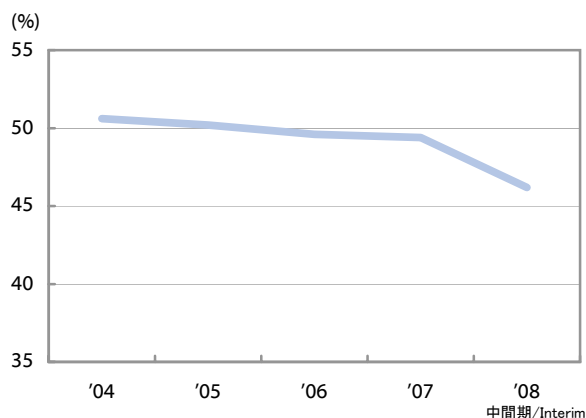
Daiwa House
Group

財政状態

Analysis of financial position

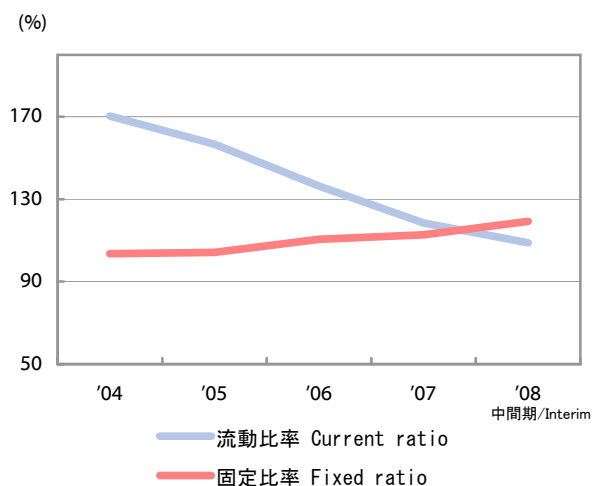
自己資本比率

Equity ratio



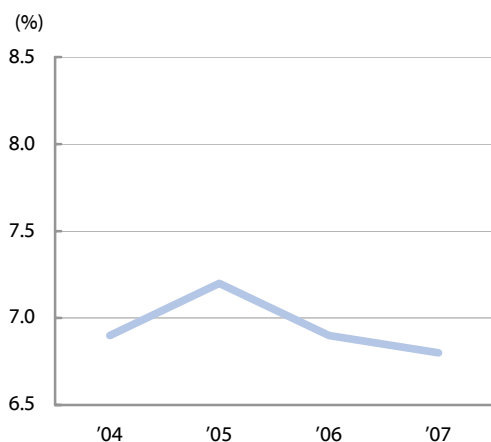
流動比率／固定比率

Current ratio/Fixed ratio



自己資本当期純利益率

Return on equity

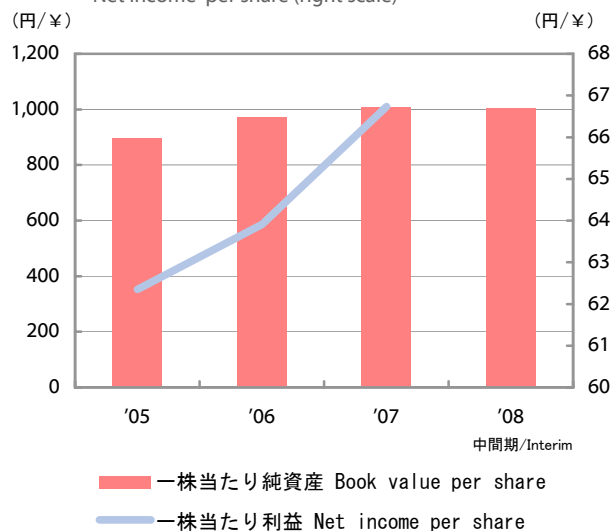


一株当たり純資産（左目盛）

Book value per share (left scale)

一株当たり利益（右目盛）

Net income per share (right scale)



(%, 一株当たり数値については円/Per share data: ¥)

Fiscal years ended March 31	2004	2005	2006	2007	2008中間期 /Interim
自己資本比率 Equity ratio	50.6	50.2	49.6	49.4	46.2
流動比率 Current ratio	170.3	156.6	136.4	118.5	108.9
固定比率 Fixed ratio	103.5	104.2	110.5	112.7	119.3
自己資本当期純利益率 Return on equity	6.9	7.2	6.9	6.8	-
一株当たり純資産 (円) Book value per share (¥)	845.3	896.2	971.3	1,010.3	1,003.8
一株当たり当期純利益 (円) Net income per share (¥)	58.64	62.35	63.91	66.73	-

Daiwa House
Group財務諸表
Financial statements

貸借対照表

Non-consolidated balance sheets

(百万円/¥Million)

Fiscal years ended March 31		2004	2005	2006	2007	2008中間期 /Interim
資産の部	Assets					
流動資産	Current assets					
現金預金	Cash and cash equivalents	100,861	79,945	65,364	52,186	32,564
受取手形・売掛金	Trade notes and accounts receivable	48,890	46,622	39,240	34,224	32,424
たな卸資産	Inventories	260,028	304,752	347,376	404,124	455,763
その他の流動資産	Other	29,618	38,528	37,972	43,001	45,877
貸倒引当金	Allowance for doubtful receivables	-1,652	-1,549	-2,072	-1,416	-976
流動資産合計	Total current assets	437,745	468,299	487,881	532,120	565,652
固定資産	Fixed assets					
有形固定資産	Property, plant and equipment	305,440	298,721	339,110	314,267	318,656
無形固定資産	Intangible fixed assets	5,877	6,244	7,423	7,533	7,792
投資その他の資産	Investments and other assets	169,951	208,960	243,958	346,520	367,061
固定資産合計	Total fixed assets	481,269	513,926	590,492	668,321	693,509
繰延資産	Deferred assets	-	-	-	-	-
資産合計	Total assets	919,015	982,225	1,078,374	1,200,441	1,259,161
負債の部	Liabilities					
流動負債	Current liabilities					
支払手形・買掛金	Trade notes and accounts payable	113,232	130,398	138,143	216,105	227,535
商業用紙	Commercial paper	-	-	-	-	60,000
未払費用	Accrued expenses	9,340	11,598	8,929	11,079	8,887
未払法人税・事業税	Income taxes payable	12,015	8,033	9,274	9,334	7,598
その他の流動負債	Other	122,448	149,032	201,392	212,632	215,222
流動負債合計	Total current liabilities	257,036	299,063	357,740	449,152	519,244
固定負債	Long-term liabilities					
社債	Bonds	-	-	-	-	-
その他の固定負債	Other	196,880	189,987	186,181	158,080	158,433
固定負債合計	Total long-term liabilities	196,880	189,987	186,181	158,080	158,433
負債合計	Total liabilities	453,917	489,050	543,921	607,232	677,678
資本の部	Shareholders' equity					
資本金	Common stock	110,120	110,120	110,120	-	-
資本剰余金	Capital surplus	147,756	147,759	147,761	-	-
利益剰余金	Retained earnings	284,739	293,964	315,157	-	-
土地再評価差額金	Land revaluation difference	-89,343	-72,385	-67,709	-	-
株式等評価差額金	Net unrealized gain on available-for-sale securities	12,171	14,197	29,769	-	-
自己株式	Treasury stock	-347	-481	-645	-	-
資本合計	Total shareholders' equity	465,097	493,174	534,453	-	-
負債・資本合計	Total liabilities and shareholders' equity	919,015	982,225	1,078,374	-	-



Daiwa House
Group

財務諸表
Financial statements

貸借対照表

Non-consolidated balance sheets

Fiscal years ended March 31		2004	2005	2006	2007	(百万円/¥ Million) 2008中間期 /Interim
純資産の部	Equity					
株主資本	Shareholders' equity					
資本金	Common stock	-	-	-	110,120	110,120
資本剰余金	Capital surplus	-	-	-	228,795	228,791
利益剰余金	Retained earnings	-	-	-	339,441	347,960
自己株式	Treasury stock	-	-	-	-24,950	-36,766
株主資本合計	Total shareholders' equity	-	-	-	653,407	650,105
評価・換算差額等	Valuation and translation adjustments					
その他有価証券評価差額金	Net unrealized gain on available-for-sale securities	-	-	-	29,585	21,240
土地再評価差額金	Land revaluation difference	-	-	-	-89,784	-89,862
評価・換算差額等合計	Total valuation and translation adjustments	-	-	-	-60,198	-68,622
純資産合計	Total equity	-	-	-	593,208	581,483
負債純資産合計	Total liabilities and equity	-	-	-	1,200,441	1,259,161



Daiwa House
Group

財務諸表
Financial statements

損益計算書

Non-consolidated statements of income

Fiscal years ended March 31		2005	2006	2007	(百万円/ ¥ Million)	
					2007中間期 /Interim	2008中間期 /Interim
売上高	Net sales	1,092,383	1,138,461	1,185,664	571,248	549,581
売上原価	Cost of sales	865,463	899,986	931,920	448,053	433,902
販売費および一般管理費	Selling, general and administrative expenses	174,798	184,009	192,750	96,765	89,597
営業利益	Operating income	52,120	54,466	60,993	26,429	26,081
受取利息・配当金	Interest income and dividends	1,959	2,146	2,446	1,664	5,673
営業外収益計	Non-operating income	8,681	23,771	7,902	3,435	7,915
支払利息	Interest expense	231	229	361	129	468
営業外費用計	Non-operating expenses	3,732	5,571	3,259	1,362	2,164
経常利益	Ordinary income	57,070	72,666	65,636	28,502	31,832
特別利益	Extraordinary profit	3,012	1,820	1,264	492	108
特別損失	Extraordinary loss	11,589	18,091	6,893	2,520	1,385
税引前当期純利益	Income before taxes	48,492	56,395	60,007	26,474	30,555
法人税等	Income taxes	14,056	21,044	21,714	9,156	10,371
当期純利益	Net income	34,436	35,351	38,292	17,318	20,184
一株当たり利益(円)	Basic net income per share (¥)	62.35	63.91	66.73	30.80	34.51
一株当たり配当金(円)	Cash dividends per share (¥)	17.00	20.00	20.00	-	-
配当性向(%)	Payout ratio (%)	27.3	31.3	30.0	-	-
金融収支	Balance between financial income and expenses	1,727	1,916	2,084	1,535	5,204
発行済株式数(千株)	Number of outstanding shares (Thousands of shares)	550,102	549,991	587,158	587,325	579,279
従業員数(人)	Number of employees	11,462	11,921	12,446	12,565	13,135



参考資料
Reference materials

住宅事業

Residential

受注経路 (住宅+集合)

Order receipt channels (Single-family houses and rental houses)

Fiscal years ended March 31		2006	2007	(%) 2008中間期 /Interim
展示場	Model house exhibitions	27	28	28
紹介	Referral sale	48	46	46
キャンペーン	Promotional campaigns	11	11	11
その他	Other	14	15	15

建替比率 (建替+住替)

Percentage of reconstruction

Fiscal years ended March 31		2006	2007	(%) 2008中間期 /Interim
建替比率	Percentage of reconstruction	30	28	27

住宅展示場

Model house exhibitions

Fiscal years ended March 31		2006	2007	2008中間期 /Interim
住宅展示場数	Number of model house exhibitions	281	277	283
住宅展示場来場者数 (人)	Number of visitors to model house exhibitions	136,406	107,704	56,716
1 展示場当たり住宅展示場 来場者数 (人)	Average number of visitors per single model house exhibition	485	389	200

平均売上金額

Average sales per unit

(百万円/¥ Million)

Fiscal years ended March 31		2006	2007	2008中間期 /Interim	
戸建	鉄骨	Steel-frame	27.7	27.9	28.8
	木造	Wood-frame	27.8	29.8	30.7
	Single-family houses, contracting		27.7	28.0	28.9
集合	低層	Steel-frame (low-rise)	8.4	8.5	8.8
	中高層	Steel-frame (high and mid -rise)	11.6	12.7	14.8
	木造	Wood-frame	8.1	8.1	8.1
Rental houses		8.7	8.8	9.3	
分譲	鉄骨	Steel-frame	22.8	23.4	23.7
	木造	Wood-frame	22.2	22.9	24.3
	Subdivisions		22.7	23.3	23.7

平均売上面積

Average area per unit

(㎡)

Fiscal years ended March 31		2006	2007	2008中間期 /Interim	
戸建	鉄骨	Steel-frame	145.0	140.0	140.2
	木造	Wood-frame	137.3	137.5	132.5
	Single-family houses, contracting		144.6	139.9	140.0
集合	低層	Steel-frame (low-rise)	48.6	47.2	49.0
	中高層	Steel-frame (high and mid -rise)	72.4	57.6	62.4
	木造	Wood-frame	54.0	50.8	48.8
Rental houses		50.8	48.2	50.1	
分譲	鉄骨	Steel-frame	124.7	124.9	123.7
	木造	Wood-frame	123.0	118.0	119.5
	Subdivisions		124.4	124.0	123.3

Daiwa House
Group参考資料
Reference materialsマンション事業
Condominiums for sale

売上高の状況

Sales

(㎡, 百万円/¥ Million)

地区 Region		戸数 Unit	専有面積 Floor space	金額 Total amount	平均専有面積 Average floor space per unit	平均売上金額 Average order per unit
北海道 Hokkaido	2007 中間期/Interim	149	13,989	4,124	93.9	27.7
	2008 中間期/Interim	342	20,286	6,618	59.3	19.4
東北 Tohoku	2007 中間期/Interim	289	22,307	6,988	77.2	24.2
	2008 中間期/Interim	157	11,969	3,763	76.2	24.0
関東 Kanto	2007 中間期/Interim	553	40,172	20,661	72.6	37.4
	2008 中間期/Interim	519	35,547	19,863	68.5	38.3
中部 Chubu	2007 中間期/Interim	310	28,988	12,105	93.5	39.0
	2008 中間期/Interim	280	24,056	8,957	85.9	32.0
近畿 Kinki	2007 中間期/Interim	519	40,591	15,265	78.2	29.4
	2008 中間期/Interim	231	18,270	6,584	79.1	28.5
中国 Chugoku	2007 中間期/Interim	68	4,892	1,983	71.9	29.2
	2008 中間期/Interim	59	4,424	1,452	75.0	24.6
九州 Kyushu	2007 中間期/Interim	176	14,911	5,649	84.7	32.1
	2008 中間期/Interim	169	13,983	5,224	82.7	30.9
合計 Total	2007 中間期/Interim	2,064	165,850	66,775	80.4	32.4
	2008 中間期/Interim	1,757	128,533	52,402	73.2	29.8

完成在庫の状況

Stock of completed construction

(㎡, 百万円/¥ Million)

地区 Region		戸数 Unit	専有面積 Floor space	金額 Total amount	平均専有面積 Average floor space per unit
北海道 Hokkaido	2007 中間期/Interim	45	4,174	948	92.8
	2008 中間期/Interim	71	6,391	1,545	90.0
東北 Tohoku	2007 中間期/Interim	119	10,398	2,961	87.4
	2008 中間期/Interim	147	12,471	3,460	84.8
関東 Kanto	2007 中間期/Interim	102	7,724	3,468	75.7
	2008 中間期/Interim	202	14,966	5,564	74.1
中部 Chubu	2007 中間期/Interim	144	11,918	3,911	82.8
	2008 中間期/Interim	89	7,649	2,428	85.9
近畿 Kinki	2007 中間期/Interim	92	8,253	2,242	89.7
	2008 中間期/Interim	155	12,025	3,423	77.6
中国 Chugoku	2007 中間期/Interim	9	639	205	71.0
	2008 中間期/Interim	39	2,817	676	72.2
九州 Kyushu	2007 中間期/Interim	46	3,880	1,089	84.3
	2008 中間期/Interim	115	9,706	2,882	84.4
合計 Total	2007 中間期/Interim	557	46,986	14,825	84.4
	2008 中間期/Interim	818	66,026	19,977	80.7

Daiwa House
Group
参考資料
 Reference materials

部門別受注高・売上高の状況
Orders received by segment, sales by segment
受注高
Orders received

(戸/Unit, 億円/¥ 100 Millions, YoY: %)

部門		2007中間期		2008中間期		前年同期比		
		/Interim		/Interim		YoY		
		戸数/Unit	金額/Amount	戸数/Unit	金額/Amount	戸数/Unit	金額/Amount	
建築請負 Construction	戸建住宅	Single-family houses, contracting	4,781	1,460	4,531	1,444	-5.2	-1.1
	集合住宅	Rental houses	14,272	1,323	14,685	1,439	2.9	8.7
	流通店舗	Commercial facilities	-	861	-	913	-	6.1
	建築	Distributions, office buildings, factories	-	611	-	596	-	-2.4
	小計	Sub-total	19,053	4,256	19,216	4,393	0.9	3.2
不動産 Real estate	分譲住宅	Subdivisions	1,015	235	906	215	-10.7	-8.5
	マンション建物	Condominiums for sale	2,390	524	1,984	409	-17.0	-21.9
	土地	Land	-	614	-	715	-	16.5
	その他	Other	-	49	-	88	-	78.6
	小計	Sub-total	3,405	1,423	2,890	1,429	-15.1	0.4
観光	Resort hotels and golf courses	-	310	-	62	-	-80.0	
合計	Total	22,458	5,990	22,106	5,885	-1.6	-1.8	

(戸/Unit, 億円/¥ 100 Millions, YoY: %)

部門		2008予想		前年同期比		
		/Estimated		YoY		
		戸数/Unit	金額/Amount	戸数/Unit	金額/Amount	
建築請負 Construction	戸建住宅	Single-family houses, contracting	9,050	2,886	-2.5	0.1
	集合住宅	Rental houses	29,300	2,888	0.2	5.3
	流通店舗	Commercial facilities	-	1,730	-	1.8
	建築	Distributions, office buildings, factories	-	1,201	-	-5.9
	小計	Sub-total	38,350	8,705	-0.5	1.2
不動産 Real estate	分譲住宅	Subdivisions	1,850	436	-2.1	-1.2
	マンション建物	Condominiums for sale	5,100	1,064	3.7	0.7
	土地	Land	-	1,394	-	11.1
	その他	Other	-	168	-	33.6
	小計	Sub-total	6,950	3,062	2.1	6.3
観光	Resort hotels and golf courses	-	103	-	-82.9	
合計	Total	45,300	11,870	-0.1	-1.8	

(注) 億円未満は切り捨てて表示しております。

(Note) Amounts less than 100 million have been eliminated.



Daiwa House
Group

参考資料
Reference materials

売上高

Sales

(戸/Unit, 億円/¥100 Millions, Y o Y: %)

部門		2007中間期		2008中間期		前年同期比		
		/Interim		/Interim		Y o Y		
		戸数/Unit	金額/Amount	戸数/Unit	金額/Amount	戸数/Unit	金額/Amount	
建築請負 Construction	戸建住宅	Single-family houses, contracting	4,669	1,425	4,640	1,475	-0.6	3.5
	集合住宅	Rental houses	13,799	1,214	13,975	1,312	1.3	8.1
	流通店舗	Commercial facilities	-	844	-	809	-	-4.1
	建築	Distributions, office buildings, factories	-	604	-	579	-	-4.0
	小計	Sub-total	18,468	4,088	18,615	4,177	0.8	2.2
不動産 Real estate	分譲住宅	Subdivisions	1,028	238	862	204	-16.1	-14.1
	マンション建物	Condominiums for sale	2,064	459	1,757	356	-14.9	-22.4
	土地	Land	-	566	-	618	-	9.2
	その他	Other	-	49	-	75	-	51.9
	小計	Sub-total	3,092	1,314	2,619	1,255	-15.3	-4.4
観光	Resort hotels and golf courses	-	310	-	62	-	-80.0	
合計	Total	21,560	5,712	21,234	5,495	-1.5	-3.8	

(戸/Unit, 億円/¥100 Millions, Y o Y: %)

部門		2008予想		前年同期比		
		/Estimated		Y o Y		
		戸数/Unit	金額/Amount	戸数/Unit	金額/Amount	
建築請負 Construction	戸建住宅	Single-family houses, contracting	9,200	2,922	-1.2	2.1
	集合住宅	Rental houses	29,900	2,858	4.0	11.6
	流通店舗	Commercial facilities	-	1,760	-	3.0
	建築	Distributions, office buildings, factories	-	1,150	-	-7.8
	小計	Sub-total	39,100	8,690	2.8	3.7
不動産 Real estate	分譲住宅	Subdivisions	1,750	416	-10.5	-8.9
	マンション建物	Condominiums for sale	4,850	1,017	-2.6	-5.8
	土地	Land	-	1,290	-	6.2
	その他	Other	-	154	-	24.6
	小計	Sub-total	6,600	2,877	-4.8	0.1
観光	Resort hotels and golf courses	-	103	-	-82.9	
合計	Total	45,700	11,670	1.6	-1.6	

(注) 億円未満は切り捨てて表示しております。

(Note) Amounts less than 100 million have been eliminated.



参考資料
Reference materials

単体PL比較表(実績比) 2007年3月期中間期/2008年3月期中間期
Comparisons of P/L (between Interim of FYE 2007/3 and FYE 2008/3)

			(百万円/¥Million)		
			2007中間期	2008中間期	増減
			/Interim	/Interim	Increase/decrease
建築請負 Construction	戸建住宅	Single-family houses, contracting	142,504	147,551	5,047
	集合住宅	Rental houses	121,481	131,299	9,817
	流通店舗	Commercial facilities	84,414	80,940	-3,474
	建 築	Distributions, office buildings, factories	60,407	57,996	-2,411
	小計	Sub-total	408,809	417,788	8,979
不動産 Real estate	分譲住宅	Subdivisions	23,807	20,460	-3,346
	マンション建物	Condominiums for sale	45,946	35,651	-10,294
	土 地	Land	56,667	61,899	5,232
	その他	Other	4,991	7,580	2,588
小計	Sub-total	131,413	125,592	-5,820	
観光	Resort hotels and golf courses		31,026	6,201	-24,825
売上高	Net sales		571,248	549,581	-21,666
建築請負 Construction	戸建住宅	Single-family houses, contracting	32,624	32,942	317
	集合住宅	Rental houses	29,555	29,821	265
	流通店舗	Commercial facilities	18,274	18,506	232
	建 築	Distributions, office buildings, factories	11,576	10,672	-904
	小計	Sub-total	92,032	91,942	-89
不動産 Real estate	分譲住宅	Subdivisions	4,875	3,792	-1,082
	マンション建物	Condominiums for sale	9,838	6,430	-3,407
	土 地	Land	4,992	7,677	2,685
	その他	Other	1,882	4,157	2,274
小計	Sub-total	21,589	22,058	469	
観光	Resort hotels and golf courses		9,573	1,677	-7,895
売上総利益	Gross profit		123,194	115,679	-7,515
販売費及び一般管理費	Selling, general and administrative expenses		96,765	89,597	-7,168
営業利益	Operating income		26,429	26,081	-347
営業外収益	Non-operating income		3,435	7,915	4,479
営業外費用	Non-operating expenses		1,362	2,164	801
経常利益	Ordinary income		28,502	31,832	3,330
特別利益	Extraordinary profit		492	108	-384
特別損失	Extraordinary loss		2,520	1,385	-1,135
税引前当期純利益	Income before taxes		26,474	30,555	4,081
法人税等	Income taxes		9,156	10,371	1,215
中間純利益	Net income		17,318	20,184	2,865

*1 観光事業の譲渡により減収（前年比-3.8%）となるも、観光を除く売上高では増収（前年比+0.6%）
Although net sales decreased 3.8% year-on-year, due to the transfer of the resort hotel business to Daiwa Resort, it would have increased 0.6% year-on-year if the resort hotel business were excluded.

*2 観光事業の譲渡により減益（前年比-6.1%）となるも、観光を除く売上総利益では増益（前年比+0.3%）
Although gross profit decreased 6.1% year-on-year, due to the transfer of the resort hotel business to Daiwa Resort, it would have increased 0.3% year-on-year if the resort hotel business were excluded.

*3 人件費+10億円、営業委託料（観光事業）-59億円、広告宣伝費-10億円、販売手数料-10億円
The year-on-year change consists of a ¥1.0 billion rise in personnel expenses, a ¥5.9 billion decrease in operation outsourcing expenses (Resort hotels and golf courses), a ¥1.0 billion decrease in advertising expenses, and a ¥1.0 billion decrease in sales promotion expenses.

*4 経営統合により子会社からの配当が増加したことによる
This increase is attributable to a rise in dividends received from consolidated subsidiaries as a result of management integration.